

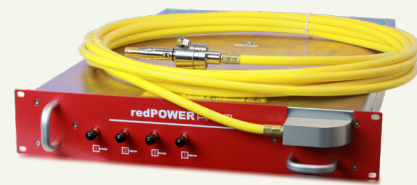


redPOWER PRISM

300W - 2kW

Power and control for cutting, welding, micro-machining and additive manufacturing.

CW OEM Fiber Laser.



Key benefits and features

A true OEM Fiber Laser allowing machine builders to offer leading edge high reliability Fiber Laser based cutting and welding machines maintaining their own brand throughout. The unique offering of up to 2kW in a single unit allows compact machine design with minimal installation time. Taking advantage of 60 years' experience, these Laser modules combine single mode beam quality, high reliability, high efficiency and fast modulation capability with easy install features.

Full feature list

- Single modules of up to 2kW output power.
- Patented back reflection protection.
- Simple integration into existing equipment.
- Process monitoring capability via back reflected radiation signal.
- Extremely compact design.
- Rack mount 19" format.
- Optional integrated pulse shaping capability.
- High frequency modulation capability.

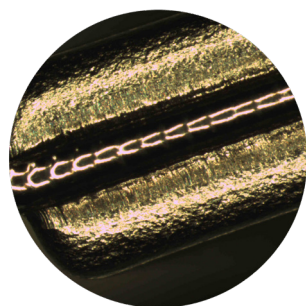
Optimised for...

High volume OEMs' who want to:

- Tightly integrate the Fiber Laser within their overall system design.
- Provide 100% of the machine and Laser service to their customers.
- Build their own systems to order, combining individual modules as required.



Thick Metal Cutting
Mild Steel, Stainless Steel,
Aluminium



Welding
Stainless Steel



Cutting
Copper, Brass,
Aluminium

PRISM concept overview

With up to 2kW of output power and output fiber options delivering M² of 1.1, or BPP of 2.1 - 4.5mm.mrad making these units extremely versatile. The units are 19" rack mount compatible and can be installed within Laser processing machines rather than as a separate cabinet, meaning only the integrator's brand name is visible to an end user. The System Integrator adds value to these modules by providing the DC power supply, a suitable enclosure with environmental control where necessary, a temperature controlled coolant supply and system level safety control.

www.spilasers.com | sales@spilasers.com

© SPI Lasers UK Ltd
SM-S00470-6

Benefits

- Lowest cost Laser for high volume manufacturers
- Opportunity for OEMs' to add value. More than a Laser reseller
- We offer OEMs' training for field servicing of modules (including delivery fiber)
- High stability, repeatability & reliability

Key features

- 300W, 500W, 750W, 1kW, 1.5kW & 2kW Output
- Single mode and multimode fiber delivery options
- PIPA-Q fiber termination with industry standard opto-mechanical compatibility and integral patented Back Reflection protection
- 19" Rack modular design
- Optional integral pulse shaping capability
- High frequency modulation

Applications

- Additive Manufacturing
- Thick Sheet Cutting
- Fast Thin Sheet Cutting
- High Speed Welding
- Remote Welding
- Cladding

Industries

- Automotive
- Advanced Manufacturing
- Flat Sheet Cutting
- General Fabrication

Go to spilasers.com for information on our full suite of Pulsed and CW Fiber Lasers.

Product Selection Parameters

Model	300W	500W	750W	1kW	1.5kW	2kW
-------	------	------	------	-----	-------	-----

Performance Data

Operating Modes	CW and Modulated					
Output Power Range	10 – 105%					
Long Term Output Power Stability ⁽¹⁾	± 2% peak					
Wavelength (nm)	1080				1075	
Linewidth (nm)	<10					
Polarisation	Un-polarised					
Min. Rise / Fall Time (µs)	<5 / <6					
Max. Modulation Frequency (kHz)	50					

Fiber Optic Beam Delivery

20µm Fiber	M ² 1.1 ± 0.1					
50µm Fiber	2.1mm.mrad BPP ⁽²⁾					
100µm Fiber	Enhanced 3.3mm.mrad BPP ⁽²⁾					
100µm Fiber	4.5mm.mrad BPP ⁽²⁾					
300µm Fiber	16mm.mrad BPP ⁽²⁾					
Alignment Laser Wavelength (nm)	630-680 (Class 2)					

Electrical

Voltage (nominal)	48V DC					
Maximum Current (A)	30	45	80	90	135	180

Environment / Cooling

Coolant Temperature (°C)	18-30				18-25	
Coolant Flow Rate (litre/min) ⁽³⁾	3	5	8	10	15	20
Coolant Connections	10mm					
Humidity	5-85% RH, 35°C Max Dew Point					

Module Dimensions

Height	2U (88mm)					
Width	19" Rack Mount (445mm)					
Depth	550mm				702mm	

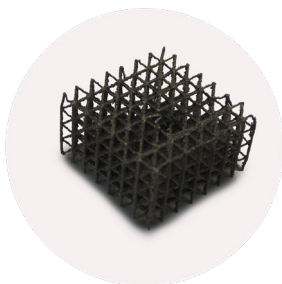
Notes

1. Constant Temperature
2. Beam Parameter Product = beam radius x half angle divergence
3. At 25°C Water Temperature

Terms and conditions

Some specific combinations of product specifications and optional accessory may not be available. These Lasers are designed as units for incorporation or integration into other equipment. All product information is believed to be accurate and subject to change without notice. A complete product specification will be issued on request and also at time of order acknowledgement. The user assumes all risks and liability whatsoever in connection with the use of the product or its application.

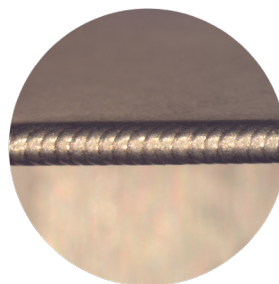
Applications



3D Printing / Additive Manufacturing
Metal Powders



Cutting
Brass, Aluminium,
Copper, Mild Steel &
Stainless Steel



Welding
Stainless Steel



Cutting
Mild Steel

